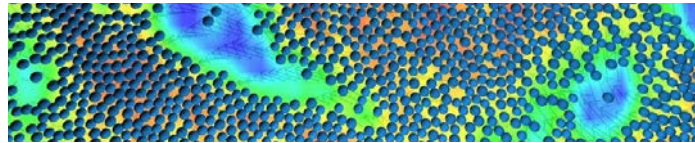


The MIST laboratory

The Laboratory of Micromechanics and Integrity of Structures (MIST) is a laboratory “without walls” common to CNRS, IRSN and University of Montpellier. To face problems such as material behaviour under harmful environments, research skills of both entities are get together, represented by the hub of Nuclear Safety Division - Security Research (PSN-RES) of IRSN and the Laboratory of Mechanics and Civil Engineering (LMGC), a CNRS-Université de Montpellier joined research unit.



Crédit photo - V. Topin

Deadlines

Early registration	Before 2015, August 31 st
Late registration	After 2015, August 31 st
Poster price	Before 2015, August 31 st

Registration fees

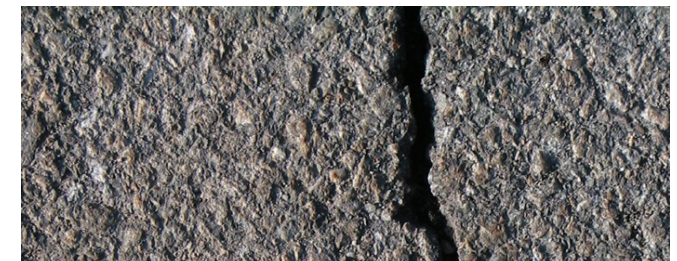
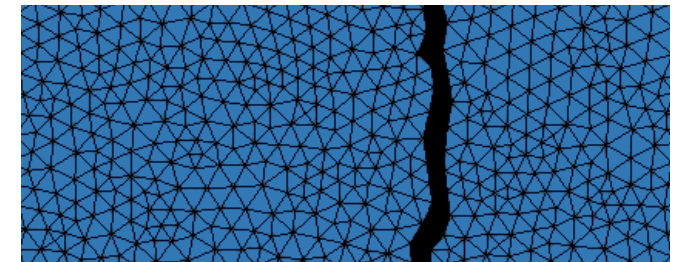
	Early	Late
--	-------	------

Speaker	250 €	250 €
Attendee	350 €	450 €
Student	250 €	250 €



WORKSHOP MIST

Friction, Fracture, Failure
[Microstructural Effects]



Crédit photo - L. Bichet

12-15 Octobre 2015
Montpellier, France
Aquarium Mare Nostrum

mist2015.lmgc.univ-montp2.fr



To celebrate its 10 years, the MIST organizes a Workshop around three of its main thematic:

- **Scale mapping**
- **Couplings**
- **Cracking**

Each thematic will be addressed from modeling, numerical simulation or experimental points of view.

MIST Poster price

The workshop committee organizes a poster exhibition during the workshop. People presenting a poster should inform the organizers during the registration procedure.

This year, a 500€ price will be attributed for the best student poster !

More details on the workshop website:
mist2015.lmgc.univ-montp2.fr



Crédit photo Gilles Diraimondo

Scale mapping

R. MASSON (CEA / Cadarache)
D. KONDO (IJRA / UPMC)
H. LE QUANG (MSME / Paris-Est)
S. BOURGEOIS (LMA / Aix-Marseille Univ.)

Coupling

J.-N. ROUX (IFSTTAR)
D. DUREISSEIX (LaMCoS / INSA-Lyon)
L. CANGEMI (IFPEN)
P. JACQUEMARD (Messier-Bugatty-Dowty)

Cracking

J.-J. MARIGO (LMS / École Polytechnique)
J.-F. MOLINARI (EPFL)
N. MOËS (GeM / Centrale Nantes)
E. SACCO (UDSCLM)

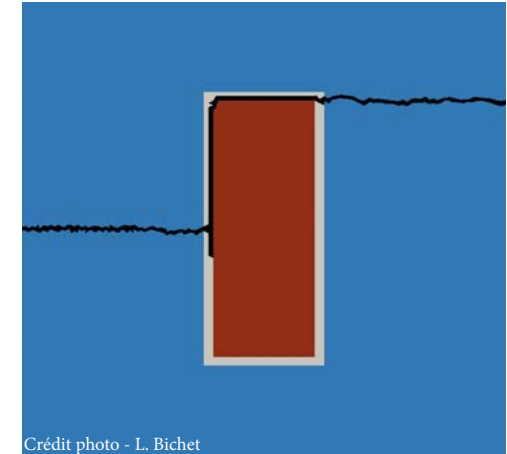
Experimental tools

Y. BERTHIER (LaMCoS / INSA-Lyon)
F. HILD (LMT Cachan / ENS)
B. WATTRISSE (LMGC)

Numerical tools

F. FEYEL (Safran)
A. WACHS (IFPEN)
H. BEN DHIA (MSSMat / Centrale Paris)
L. STAINIER (GeM / Centrale Nantes)

- A. PANDOLFI (Politecnico di Milano)
- A. COMBESCURE (LaMCoS / INSA-Lyon)
- M. IDIART (Universidad Nacional de la Plata)
- S. ROUX (LMT Cachan / ENS Cachan)



Crédit photo - L. Bichet

Organization committee

Chair

André Chrysochoos

Vice-chairs

Yann Monerie
Pierre-Guy Vincent

Local Organization committee

Pierre Alart	Olivier Marchand	Fahrang Radjaï
Roxane Cremer	Rémy Mozul	Mathieu Renouf
Loïc Daridon	Stéphane Pagano	Chantal Romano
Frédéric Dubois	Frédéric Pérales	Kheira Sahli
François Gibier	Céline Pelissou	Bertrand Watrisse

contact: mist2015@lmgc.univ-montp2.fr